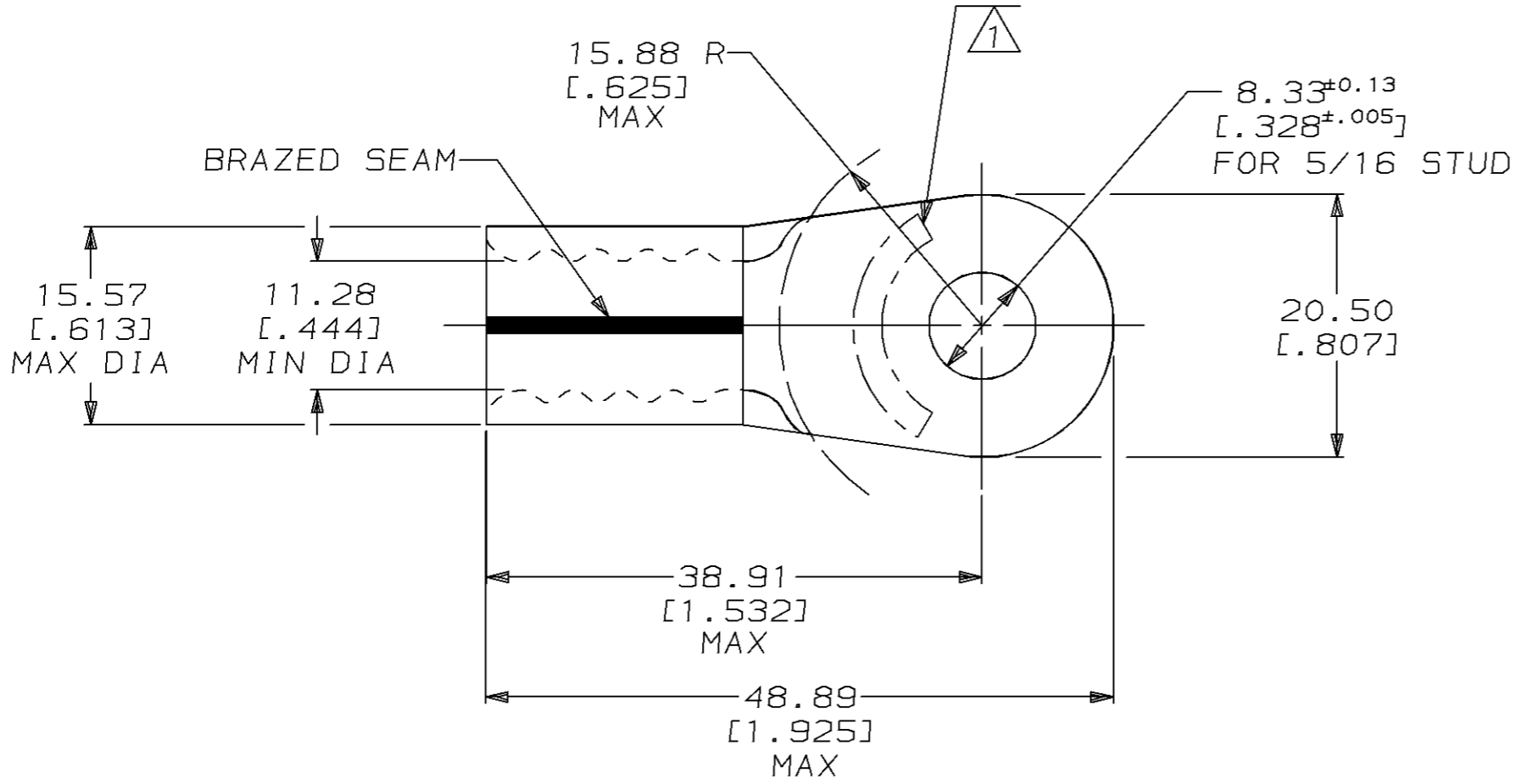


THIS DRAWING IS UNPUBLISHED. RELEASED FOR PUBLICATION, 19  
 © COPYRIGHT 19 BY AMP INCORPORATED. ALL INTERNATIONAL RIGHTS RESERVED.

LOC	DIST	P	F	ZONE	LTR	REVISIONS	DATE	APPD
G	14				F	REVISED PER 0720-0465-95	02MAR95	DKS AJK

AMP PART NO	MATERIAL	PKG TYPE	QTY
8-321867-3	M/F 8-321867-0	BOX	25

**METRIC**  
 DIMENSIONS LISTED IN mm [ INCHES ]



<b>AMP</b> WIRE RANGE	<b>UL</b> E13288 Listed
1/0 AWG SOLID OR STRANDED	1/0 AWG SOLID OR STRANDED
<b>CS</b> LR7189 Certified	MILITARY P/N AND CLASS
1/0 AWG SOLID OR STRANDED	MS 20659-151 CLASS 2

- 1 STAMP AMP 1/0W\* APPROX AS SHOWN
- 2 MATERIAL THK: 1.78±0.08 [.070±.003]

AMP INCORPORATED CUSTOMER SERVICE SYSTEMS		MAX RECOMMENDED OPERATING TEMPERATURE: 170°C MAX		DO NOT SCALE PRINT. UNLESS SPECIFIED		DR 5/25/93 DK SCHRUM		321867 PART NO	
FOR ADDITIONAL PRODUCT INFORMATION OR COPIES OF DRAWINGS AND TECHNICAL DOCUMENTS		PRODUCT INFORMATION CENTER 1-800-522-6752		DIMENSIONS IN mm [INCHES]		CHK 1/27/94 RD HEIM		AMP AMP Incorporated Harrisburg, PA 17105-3608	
FOR APPLICATION TOOLING INFORMATION		TOOLING ASSISTANCE CENTER 1-800-722-1111		TOLERANCES ON: 2 PLC DEC ± 0.20 [.008] 3 PLC DEC ± - ANGLES ± -		APPD 1/27/94 RE ROSER		NAME TERMINAL, RING TONGUE, SOLISTRAND™	
FOR ORDER ENTRY		1-800-526-5142		MATERIAL COPPER PER ASTM B-152 ANNEALED		APPD 1/27/94 JL MECKLEY		SIZE B	
THIS DRAWING IS A CONTROLLED DOCUMENT FOR AMP INCORPORATED. IT IS SUBJECT TO CHANGE AND THE CONTROLLING ENGINEERING ORGANIZATION SHOULD BE CONTACTED FOR THE LATEST REVISION.		WIRE CROSS SECTIONAL AREA RANGE: 42.4-60.6mm <sup>2</sup> [83,700-119,500] CIR MILS SOLID OR STRANDED		FINISH TIN PLATE 0.00254 [.000100] MIN THK PER MIL-T-10727		PRODUCT SPEC -		CAGE CODE 00779	
						APPLICATION SPEC -		DRAWING NO C-321867	
						WEIGHT -		SCALE 2:1	
								SHEET 1 OF 1	